

# Crashes In Ann Arbor

[www.crashesinannarbor.org](http://www.crashesinannarbor.org)

# Content Warning

Traffic crashes

Injuries

# Introductions

Peter Houk

Former board member of WBW(C)

Current TC member

Manufacturing Engineer

# Scope

Fatality and serious injury traffic crashes in Ann Arbor, involving pedestrians, cyclists or scooters

From years 2023 through 2024

Reviewing police reports and visiting the locations in person

Serious=

fatality or incapacitating injury=

K/A

# Process

## Go and see

- ↳ Experience the area as a user
- ↳ Observe
- ↳ Photograph
- ↳ Match conditions, time of day, etc.

## Request incident reports

## Identify problems

## Document and share

- ↳ [a2fixit.org](http://a2fixit.org)
- ↳ [www.crashesinannarbor.org](http://www.crashesinannarbor.org)
- ↳ AAPD traffic enforcement request

# 2024 Updates

AAPD Traffic Safety Plan

2023 and 2024 crash statistics

Improvements at crash sites

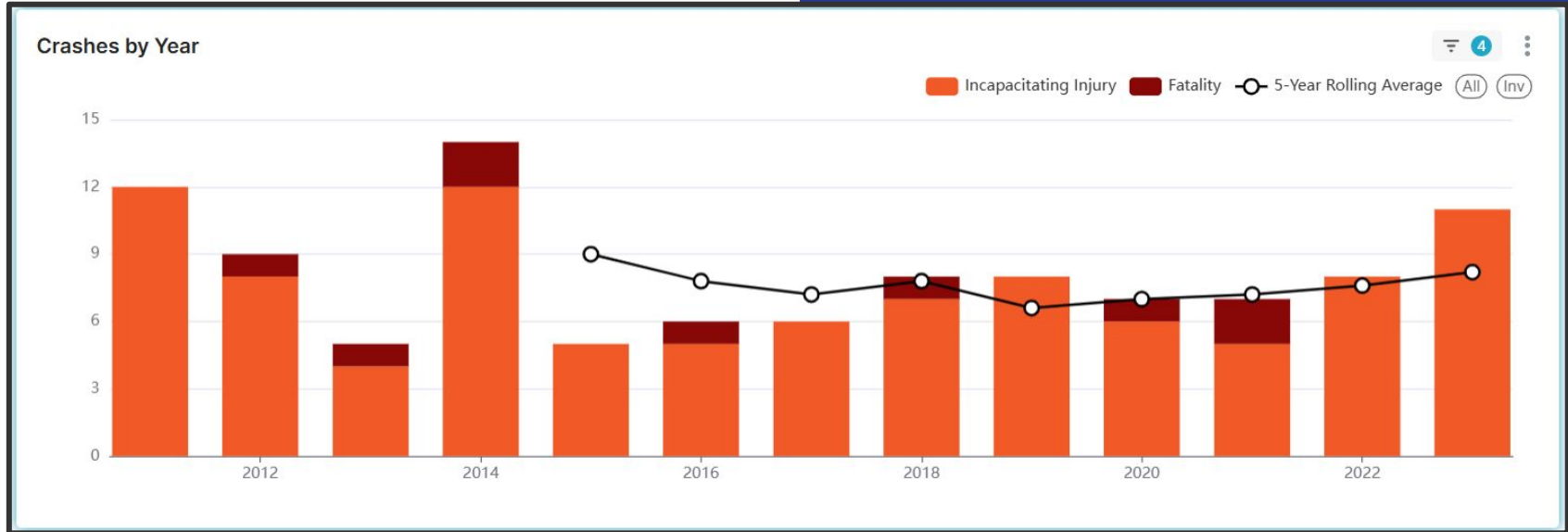
- ↳ Maple

- ↳ Packard/Hill

- ↳ FYAs

# Pedestrian K/A Crashes

Source: City of Ann Arbor  
Traffic Crash Explorer at  
[www.a2gov.org](http://www.a2gov.org)

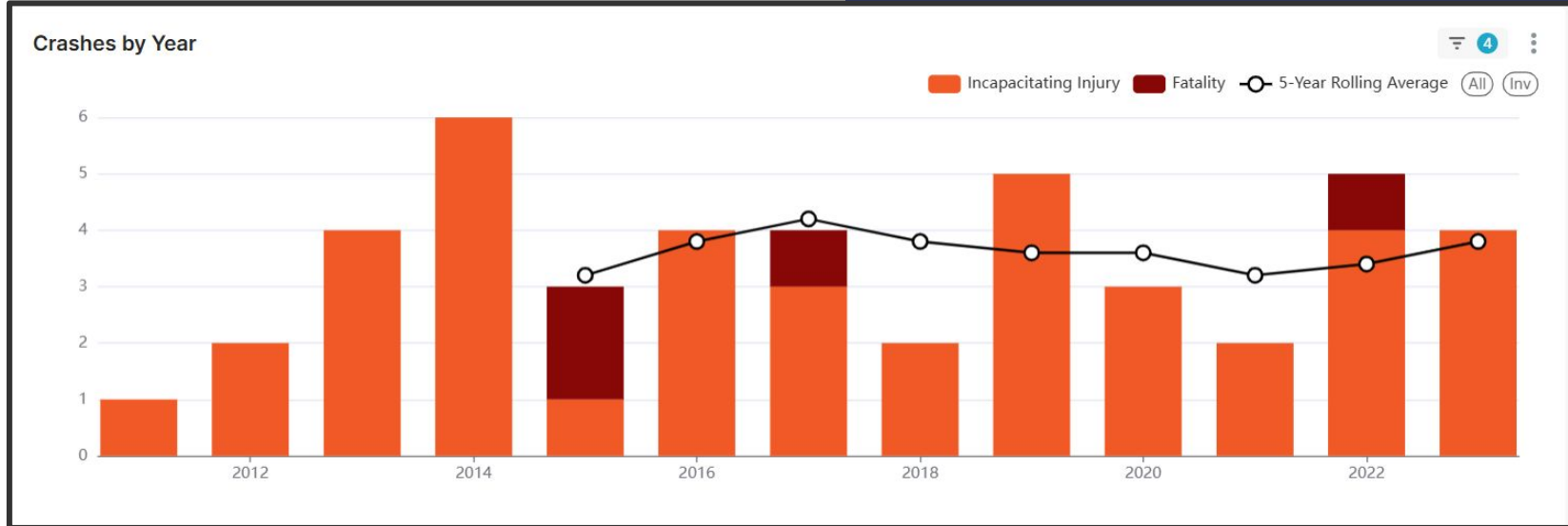


2023 data includes one e-scooter crash (A)

2023 data does not include pedestrian crash on Huron (K)

# Bike K/A Crashes

Source: City of Ann Arbor  
Traffic Crash Explorer at  
[www.a2gov.org](http://www.a2gov.org)



# Non-Ped/Bike K/A Crashes

Source: City of Ann Arbor  
Traffic Crash Explorer at  
[www.a2gov.org](http://www.a2gov.org)



2023 crashes includes one Spin scooter (K), one gas-powered moped (A), and one unidentified “motorized scooter”

# Maple Bike Crash



The sign that obscured the view of the sidewalk has been removed

# Hill/Packard Scooter Crash



Louvers added to pedestrian signals



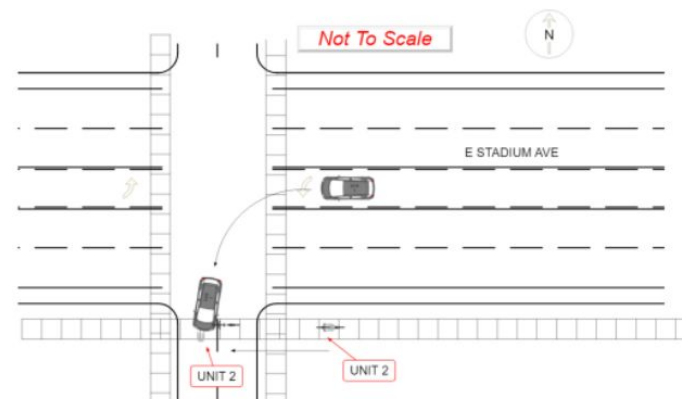
# Flashing Yellow Arrows



## Narrative

The driver of Unit 1 said he was turning left from going westbound on E Stadium Ave to southbound on Brockman Blvd. He had a flashing yellow traffic signal, there was no oncoming traffic, and he did not see anyone in the crosswalk. The east/west crosswalk did have a walk signal. As he turned south he said he saw a bicycle approaching from his left and he stopped his vehicle. The driver said he then saw the cyclist tumble to the ground in front of him. New damage near the front left wheel showed where the bike hit the side of the car. The cyclist said the car was still in motion when she struck it. The bike, a black Diamondback road bike with no lights, seemed to have scratches but no significant damage. The cyclist was transported to U of M Hospital by HVA for injuries to her face. The cyclist said she thought her face struck the pavement after going across the hood of the car. I observed minor scratches on her helmet.

## Diagram



# Get Involved

Go and see for yourself

Check out the AAPD/Engineering  
crash response process

Demand Action

- ↳ Slower speed
- ↳ Fewer lanes (road diets)
- ↳ Trunk Line transfer

# Crashes In Ann Arbor

Changing how we react to serious crashes

[www.crashesinannarbor.org](http://www.crashesinannarbor.org)

LAST SLIDE

# Ped/Bike K/A Crashes 2011-2022

Source: City of Ann Arbor  
Traffic Crash Explorer at  
[www.a2gov.org](http://www.a2gov.org)

